

SCHOOL NEWS

Coronavirus Update | Home Learning | Year 1 Performance



Department
for Education

Coronavirus Update

I would like to take this opportunity to reassure our families that we are working extremely closely with the Local Authority, NHS and DfE to manage our response to the Coronavirus. We are under the direct advice of the Local Authority and Government directives, and have put the recommended risk assessments and critical incident planning in place. Consideration has been given to: sharing information, advice and online links; staffing levels; partial/full closure of school; deep cleaning measures; school trips and potential remote learning.

Please refer to the following links for the most recent information and advice:

Where to find the latest information

Updates on COVID-19:

- <https://www.gov.uk/coronavirus>
- [Stay at home: guidance for people with confirmed or possible coronavirus \(COVID-19\) infection](#)
- Guidance for educational settings:
- <https://www.gov.uk/government/publications/guidance-to-educational-settings-about-covid-19>

We are working with the children to encourage the best hand washing practice. Some parents have contacted us to say this is not being carried out by all children. Please be reassured that we have acted on these concerns and have stepped up reminders and supervision. The following links have been provided for further guidance:

How to wash your hands properly

Wash your hands more often for 20 seconds with soap and hot water.

Watch this short NHS film for guidance:

- <https://youtu.be/bQCP7waTRWU>

Teach young children how to wash their hands with the NHS handwashing song:

- <https://www.youtube.com/watch?v=S9VjeIWLnEg>

Public Health England recommends that in addition to handwashing before eating, and after coughing and sneezing, everyone should also wash hands after using toilets and travelling on public transport.

Symptoms

	Coronavirus <small>Symptoms range from mild to severe</small>	Cold <small>Gradual onset of symptoms</small>	Flu <small>Abrupt onset of symptoms</small>
Fever	Common	Rare	Common
Fatigue	Sometimes	Sometimes	Common
Cough	Common* (usually dry)	Mild	Common* (usually dry)
Sneezing	No	Common	No
Aches and pains	Sometimes	Common	Common
Runny or stuffy nose	Rare	Common	Sometimes
Sore throat	Sometimes	Common	Sometimes
Diarrhea	Rare	No	Sometimes for children
Headaches	Sometimes	Rare	Common
Shortness of breath	Sometimes	No	No

Sources: World Health Organization, Centers for Disease Control and Prevention



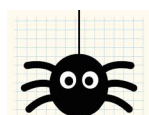
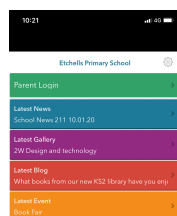
PTA Fish and Chip Bingo Night



As it stands, we still plan to go ahead with the very popular Fish and Chip Bingo Night. There are still some tickets left; these can be bought using the reply slip on the letter or by logging on to the

Parent Area of the school website. Please remember that if you are accessing the website on a mobile device such as your phone, it is much better to use the School Spider App, as this provides direct links to payments etc.

We will continue to monitor Local Authority advice very closely regarding holding events in school, and should there be any change, we will inform parents immediately by text and email. Should we be unable to go ahead with the evening, we will schedule a new date later in the year and tickets can either be transferred or refunded.



School Spider App

Home Learning

Should the Government decide to close schools in England, we will inform you of arrangements without delay. Our plan is to use the school website to set work for the children. We are making sure the all children have their log-ins and are familiar with the pupil area. We can use this online platform to set work, provide tasks that can be downloaded and printed and to enable online interaction between pupils and teachers. Should you require anything in addition to this, year group specific books can be bought cheaply from <https://www.cgpbooks.co.uk/> This is, however, entirely optional whereas the school website work will be an expectation.

Year 1 Performance

Over the last few months, Year 1 have been very busy working with one of Stockport's music consultants, Jill Henderson-Wild, to take part in a multi-school performance of 'The Princess and the Pea'. Last week, they travelled to the Lighthouse Church in Salford where they sang beautifully and looked amazing in their costumes! Unfortunately, there wasn't enough room for parents so we decided to hold a separate performance here in school, yesterday afternoon. The children were brilliant, singing clearly with actions and using their bodies as percussion instruments. This opportunity really bought the music curriculum alive for our Y1 children and my thanks go out to everyone involved.



We will continue to monitor the public health situation on a day by day basis and should any changes be announced, we will be in touch with parents before the newsletter next Friday.

Kind regards,

Cathy Beddows

and the Etchells staff

